

BTGAB6

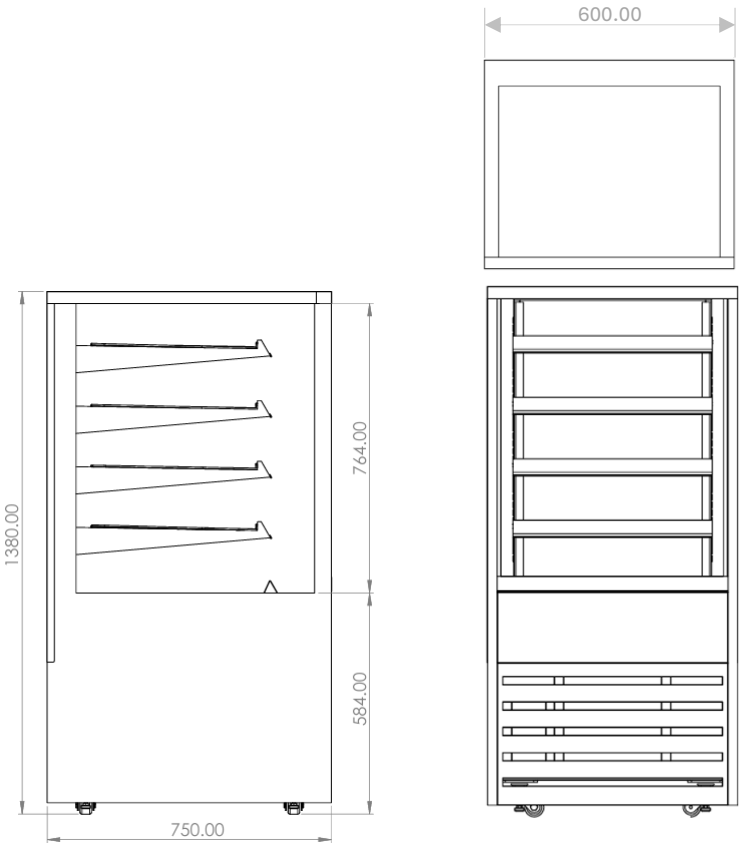


BTGAB6-SD



PRODUCT FEATURES

- Single glazed
- Sliding rear doors (HT6 Hinged)
- Solid front or sliding front doors
- Solid front that hinges at base
- Four adjustable shelves – flat or angled
- Ambient converted from heated
- Ticket strips on shelves and base
- Under shelf and canopy LED lights



CABINET DIMENSIONS AND SPECIFICATIONS

| MODEL | | CABINET | | | SHELVING | OPERATING TEMP | SHELF | BASE TRAY | TOTAL FOOD | DISPLAY | FREQUENCY | POWER | | CONNECTION POWER CORD 2200MM | | VOLTAGE | PACKED FOR SHIPPING | | | |
|---------------------|-------------|------------|-------------|-----------|----------|----------------|-----------|-----------|-------------|---------|-----------|---------|-----|------------------------------|------------|---------|---------------------|------------|-------------|-----------|
| | LENGTH (MM) | DEPTH (MM) | HEIGHT (MM) | WEIGHT KG | | DEG C | W X D | W X D | 100MM UNITS | M² | Hz | KW 230V | AMP | NZ/AUS 10 AMP | UK 13 AMP | V | LENGTH (MM) | DEPTH (MM) | HEIGHT (MM) | WEIGHT KG |
| BTGAB6 BTGAB6-SD | 600 | 750 | 1380 | 112 | 4 + BASE | N/A | 490 X 445 | 540 X 510 | 100 | 1.14 | 50/60 | 0.05 | 0.2 | 3 PIN PLUG | 3 PIN PLUG | 220-240 | 700 | 830 | 1550 | 118 |

BTGAB9

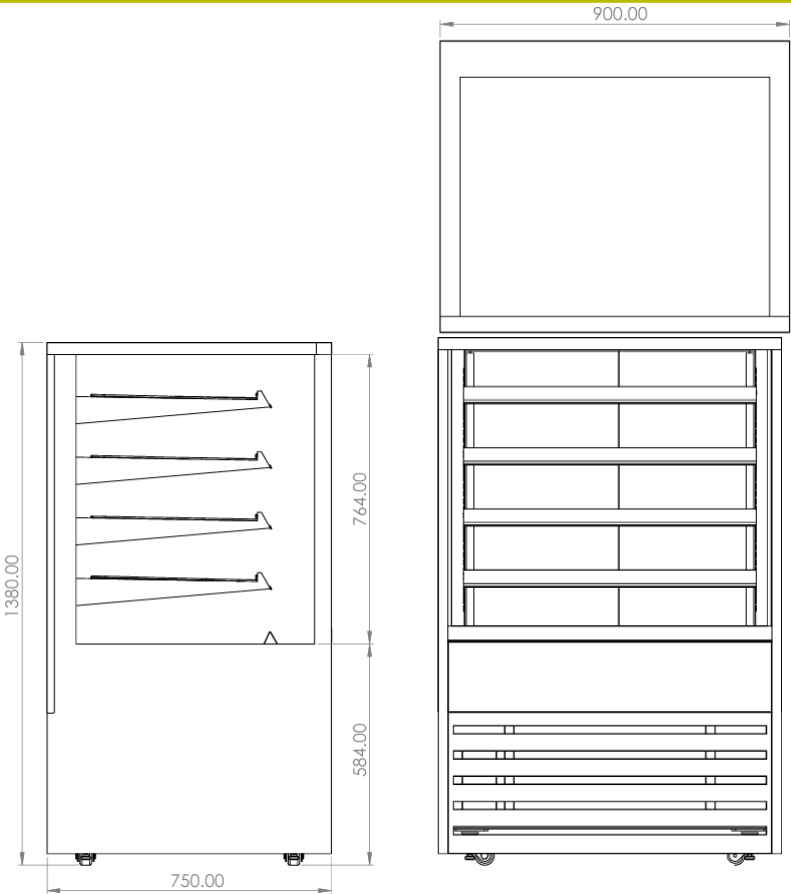


BTGAB9-SD



PRODUCT FEATURES

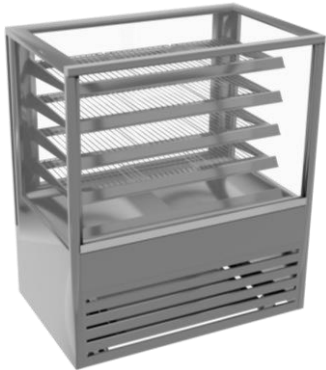
- Single glazed
- Sliding rear doors (HT6 Hinged)
- Solid front or sliding front doors
- Solid front that hinges at base
- Four adjustable shelves – flat or angled
- Ambient converted from heated
- Ticket strips on shelves and base
- Under shelf and canopy LED lights



CABINET DIMENSIONS AND SPECIFICATIONS

| MODEL | CABINET | | | | SHELVING | OPERATING TEMP | SHELF | | BASE TRAY | TOTAL FOOD | DISPLAY | FREQUENCY | POWER | | CONNECTION POWER CORD 2200MM | | VOLTAGE | PACKED FOR SHIPPING | | | |
|---------------------|-------------|------------|-------------|-----------|----------|----------------|-----------|-----------|-----------|------------|---------|-----------|---------|-----|------------------------------|------------|---------|---------------------|------------|-------------|-----------|
| | LENGTH (MM) | DEPTH (MM) | HEIGHT (MM) | WEIGHT KG | | | W X D | W X D | | | | | KW 230V | AMP | NZ/AUS 10 AMP | UK 13 AMP | | LENGTH (MM) | DEPTH (MM) | HEIGHT (MM) | WEIGHT KG |
| BTGAB9 BTGAB9-SD | 900 | 750 | 1380 | 146 | 4 + BASE | N/A | 790 X 445 | 840 X 510 | 168 | 1.83 | | 50/60 | 0.07 | 0.3 | 3 PIN PLUG | 3 PIN PLUG | 220-240 | 1000 | 830 | 1550 | 152 |

BTGAB12

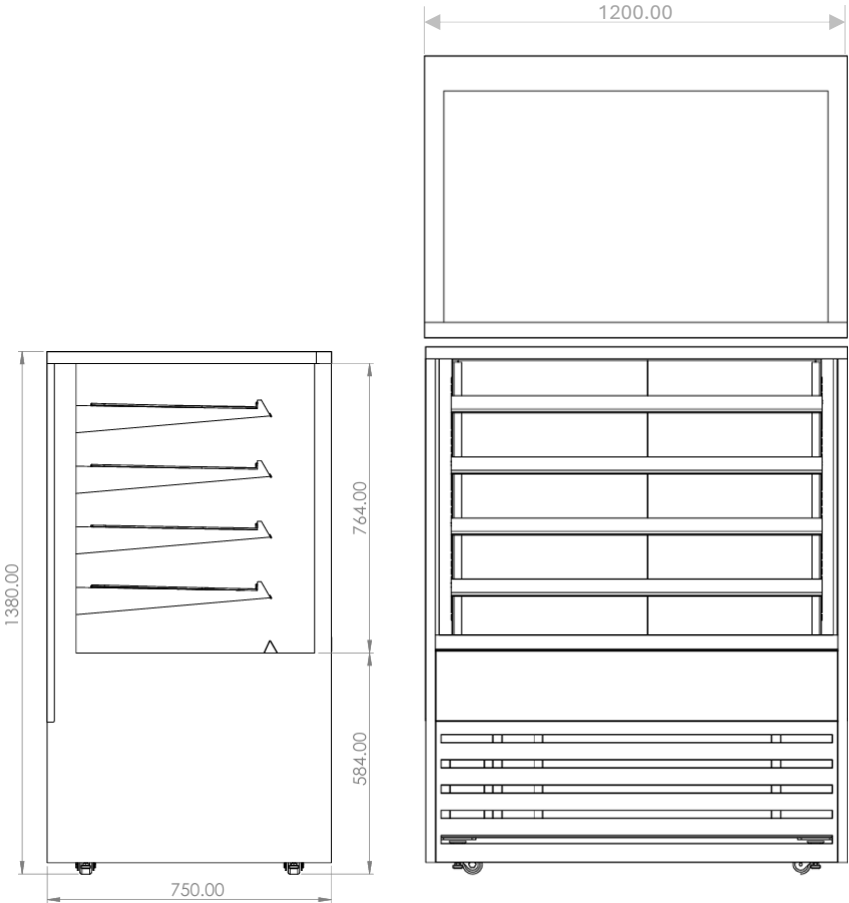


BTGAB12-SD



PRODUCT FEATURES

- Single glazed
- Sliding rear doors (HT6 Hinged)
- Solid front or sliding front doors
- Solid front that hinges at base
- Four adjustable shelves – flat or angled
- Ambient converted from heated
- Ticket strips on shelves and base
- Under shelf and canopy LED lights



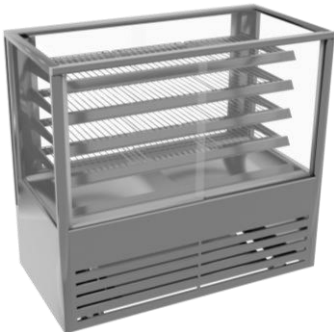
CABINET DIMENSIONS AND SPECIFICATIONS

| MODEL | CABINET | | | | SHELVING | OPERATING TEMP | SHELF | | TOTAL FOOD | DISPLAY | FREQUENCY | POWER | | CONNECTION POWER CORD 2200MM | | VOLTAGE | PACKED FOR SHIPPING | | | |
|-----------------------|-------------|------------|-------------|-----------|----------|----------------|------------|------------|------------|---------|-----------|---------|-----|------------------------------|------------|---------|---------------------|------------|-------------|-----------|
| | LENGTH (MM) | DEPTH (MM) | HEIGHT (MM) | WEIGHT KG | | | W X D | W X D | | | | KW 230V | AMP | NZ/AUS 10 AMP | UK 13 AMP | | LENGTH (MM) | DEPTH (MM) | HEIGHT (MM) | WEIGHT KG |
| BTGAB12 BTGAB12-SD | 1200 | 750 | 1380 | 157 | 4 + BASE | N/A | 1090 X 445 | 1140 X 510 | 255 | 2.52 | 50/60 | 0.09 | 0.4 | 3 PIN PLUG | 3 PIN PLUG | 220-240 | 1300 | 830 | 1550 | 165 |

BTGAB15

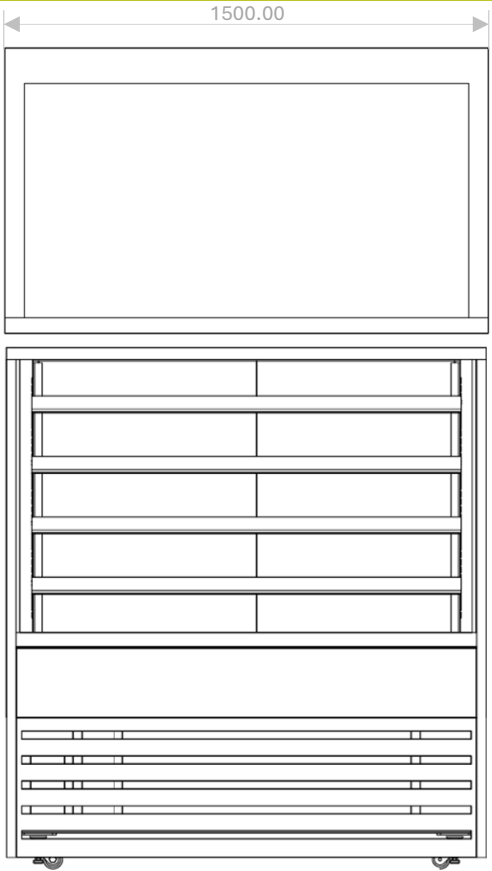
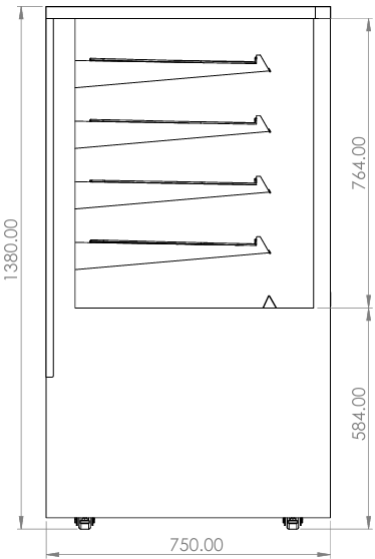


BTGAB15-SD



PRODUCT FEATURES

- Single glazed
- Sliding rear doors (HT6 Hinged)
- Solid front or sliding front doors
- Solid front that hinges at base
- Four adjustable shelves – flat or angled
- Ambient converted from heated
- Ticket strips on shelves and base
- Under shelf and canopy LED lights



CABINET DIMENSIONS AND SPECIFICATIONS

| MODEL | CABINET | | | | SHELVING | OPERATING TEMP | SHELF W X D | BASE TRAY W X D | TOTAL FOOD 100MM UNITS | DISPLAY M² | FREQUENCY Hz | POWER | | CONNECTION POWER CORD 2200MM | | VOLTAGE V | PACKED FOR SHIPPING | | | |
|-----------------------|-------------|------------|-------------|-----------|----------|----------------|-------------|-----------------|------------------------|------------|--------------|---------|-----|------------------------------|------------|-----------|---------------------|------------|-------------|-----------|
| | LENGTH (MM) | DEPTH (MM) | HEIGHT (MM) | WEIGHT KG | | | | | | | | KW 230V | AMP | NZ/AUS 10 AMP | UK 13 AMP | | LENGTH (MM) | DEPTH (MM) | HEIGHT (MM) | WEIGHT KG |
| BTGAB15 BTGAB15-SD | 1500 | 750 | 1380 | 170 | 4 + BASE | N/A | 1390 X 445 | 1440 X 510 | 355 | 3.20 | 50/60 | 0.12 | 0.5 | 3 PIN PLUG | 3 PIN PLUG | 220-240 | 1600 | 830 | 1550 | 178 |